

ORVEE

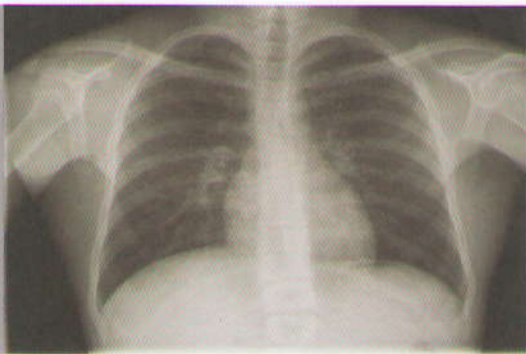
MEDICAL SOLUTIONS



BIS Certified

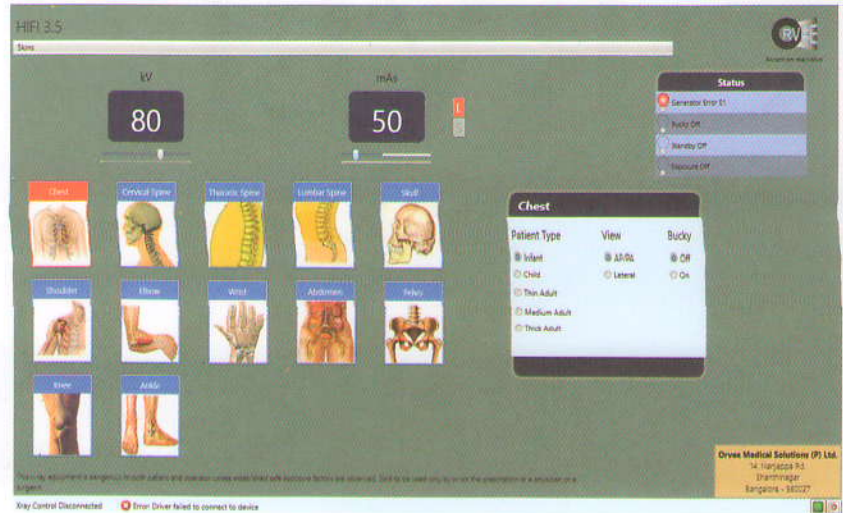
AERB Type Approved

HIFI 3.5 Mobile X-Ray Radiography System



Advanced Technology:

Orvee Medical Solutions specializes in computer based diagnostic X-Ray Machines. The model HIFI 3.5 has an attractive TFT monitor display which is embedded with an anatomical program of different body parts. This interface makes it appealing, simple and user friendly.



REPRESENTED BY:

Mobility:

The perfectly balanced lightweight x-ray unit can be moved anywhere within the hospital at ease. The gas spring helps in positioning the tube to suit different bed heights. The stability is maintained by a well designed base with a balanced tube head.

Salient Features

Anatomical Program

Enables users to select from more than 200 presets available

Radiographic Settings

Single step KVP & mAs settings for better Radiographic results

Automatic Line Voltage Compensation

SPECIFICATIONS

Max Power Output : 3.5 KW

X-ray Tube : Stationary Anode

Tube Voltage : 40kV to 100kV (Selection in steps of 1 kV)

mA Max : 80mA

Timer : 0.02secs to 5secs solid state

Display : Computerized KV & mAs

Manufactured By: ORVEE MEDICAL SOLUTIONS PVT LTD, Bangalore-560027

Marketed by :

Vinod Medical Systems Pvt. Ltd.

Certifications: ISO 9001:2008, ISO 14001:2004, ISO 13485:2003 and CE.

Regd. Off.: Kripa Kunj, B 1-2, Sai Nagar, Near Railway Crossing, Raipur - 492 009, (C.G), India. Tel.: +91 771 4214400 / 21, Fax : +91 771 2882404

Corp. Off.: B - 523, Chintamani Plaza, Mohan Studio Compound, Andheri Kurla Road, Chakala, Andheri (E) Mumbai - 400 099. India. Tel.: +91 22 42152020 / 21, Fax.: +91 22 42152024

