

Supersonic, Strong & Stable

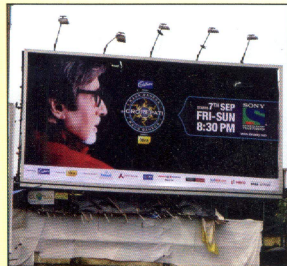
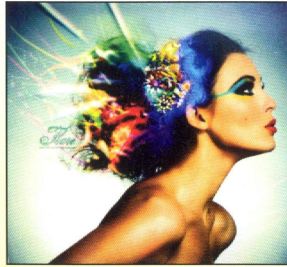
SUMO



HIGH SPEED INDUSTRIAL GRADE SOLVENT PRINTER

FEATURES

- Industrial print heads, consistent quality & long lasting performance.
- Best in class print quality, suitable for outdoors & indoors signage.
- High quality prints at blazing high speed of 1600 sq.ft./hr.
- Consistent jetting using AIVC technology.
- Trouble Free Gravity Fed Ink control.
- Pressure purge for individual color. Saves on inks & time.
- Automatic bulk ink supply system.
- Intelligent interweave pass control.
- Smart printing on more white background prints.
- Effective Vacuum Bed Platen to hold various media.
- Less area required for loading & unloading media due to dual roller feeding system.
- Automatic media feeding for normal & black-backed media.
- Pre heating, post heating & fan evaporative dryer.
- USB high speed Interface for faster data transfer.



SPECIFICATIONS

Printing Technology		Drop on demand, Piezo electric inkjet
Print Heads		Konica Minolta, Xaar, Fuji Diametrix
Media	Width	3300 mm (129 in.)
	Thickness	Maximum 3.0mm (120 mil) with liner (flexible)
	Roll Outer Diameter	Maximum 352mm (14 in.)
	Roll Weight	Maximum 150 kg.
	Core Diameter*1	76.2 mm (3 in)
Type		SAV, PVC Banner, backlit film, window film, fabric (Solvent base)
Printing Width *2		Maximum 3200 mm (126 in.)
Inks	Types	Solvent/Mild solvent Inks
	Colors	Four colors (Cyan, Magenta, Yellow and Black)
Printing Resolution (dots per inch)		Maximum 1080 dpi
Media Heating System*4		Pre and post heater, setting range for the preset temperature
Connectivity		High Speed USB
Power Requirements		AC 220V+10%, 15A 50/60 Hz
Dimensions		4500x1000x1,400 mm (WxDxH)
Weight (approx. with stand)		1000 Kgs.
Environmental	Power On	Temperature : 18 to 28°C Humidity : 20 to 60% RH (Non condensing)
	Power Off	Temperature : 5 to 40°C Humidity : 20 to 60% RH (Non condensing)



Konica 512	4 Head Production SQFT Per Hour	8 Head Production SQFT Per Hour	Proton 382	4 Head Production SQFT Per Hour	8 Head Production SQFT Per Hour	Konica 1024	4 Head Production SQFT Per Hour	8 Head Production SQFT Per Hour	Spectra Polarise	2 Head Production SQFT Per Hour	4 Head Production SQFT Per Hour
180x720 2 Pass	460	875	180x720 2 Pass	400	800	180x720 2 Pass	800	1600	180x720 2 Pass	350	700
180x1080 3 Pass	375	725	180x1080 3 Pass	350	700	180x1080 3 Pass	500	1000	180x1080 3 Pass	300	600
240x720 2 Pass	350	700	240x720 2 Pass	300	600	240x720 2 Pass	700	1400	240x720 2 Pass	300	600
240x1080 3 Pass	300	600	240x1080 3 Pass	250	500	240x1080 3 Pass	450	900	240x1080 3 Pass	250	500



Vinod Medical Systems Pvt. Ltd.

CORPORATE OFFICE : 523, B-wing, Chintamani Plaza, Mohan Studio Compound, Chakala, Andheri Kurla Road, Andheri (E), Mumbai - 400099, India
Tel. : + 91 22 42152020/21, Fax.: + 91 22 42152024, e-mail : www.vinodmedical.com

RAIPUR - +91-9826175753, +91-07898416333, **JABALPUR** - +91-9826637379, **BHOPAL** - +91-9302087878, +91-9754561946, **INDORE** - +91-9826173299,
GWALIOR - +91-8878381555 **LUCKNOW** - +91-9935866827, +91-9935966833, **SAMBALPUR** - +91-9090830569, **CUTTACK** - +91-9437057024, **NAGPUR** - +91-8817309395